

Getting Started with TCDs or TCRs

November 18, 2010

Seamless Interface with CU*BASE

Why Should I use a TCD or TCR with CU*BASE?

Teller Cash Dispensers (TCDs) and Teller Cash Recyclers (TCRs) offer you increased security and accuracy in the handling of cash at your credit union. This increases the productivity of your staff and allows for more opportunities for cross-selling by your employees.



Special points of interest:

- Features List
- TCD and TCR Screens in CU*BASE
- Supported TCD and TCR models
- Getting Started

Inside this issue:

Highlights of Features	2
Teller Screens	3
Maintenance Screens	4
Supported Models	6
Getting Started	8
Documentation	8

CU*BASE provides seamless integration with supported TCD and TCR models. It is easy for credit union employees to interact with the machines through teller, transfer and maintenance options.

Teller Transactions

Tellers can easily process member transactions, either dispensing money from a TCD or depositing to and dispensing from a TCR. At dispense, auto-mix screens provide a standard mix of bill denominations that tellers can adjust to a member's preference. When depositing to a TCR, the tellers use a specially designed screen to review the deposited funds to ensure accuracy of the deposits.

Vault Transfers

Vault transfers to and from the TCD or TCR are processed seamlessly through standard CU*BASE bulk transfer screens, making it easy to use these devices as supplemental vaults for your teller stations.

Maintenance

Current inventory of TCDs and TCRs is easily monitored from any computer at the credit union through the CU*BASE Inventory screen. An Inventory Analysis screen allows for analysis of transaction activity. While a TCD permits removal of bills by opening the door of the device, a TCR requires an additional Audit screen to quickly empty the device of its cash for audit purposes.



CU*BASE and TCD/TCR Integration Highlights of Features

*CU*Answers
integrates your
TCD or TCR
seamlessly with
CU*BASE.*

- Set the default Auto Mix by number of bills or amount of cash (such as always giving at least two \$5 bills with every transaction) while configuring the device.
- Tellers can adjust this default Auto Mix at the time of a dispense to fit the member's request.
- Dispense bills from a TCD or TCR though the standard teller posting screens.
- Dispense coin from a teller transaction from a TCD. InstaChange coin dispensers are supported for Talaris Twinsafe and Vertera models.
- Deposit bills to a TCR though a specially designed "cash in" screen that is easily accessed while processing a transaction.
- Share a TCD or TCR device between two tellers.
- Access all your Daily Maintenance functions from one screen through the Head Teller (MNHTEL) menu.
- View the current inventory of any TCD or TCR from any workstation at your credit union.
- Balance your TCD through a Inventory Analysis screen which lists a historical record of transactions made with CU*BASE.
- TCRs have an added ability to monitor daily transaction activity, so use CU*BASE to provide a second confirmation of this activity.
- Audit and empty a TCR through with one easy-to-use screen.
- Replenish a teller drawer with funds from a TCD or TCR though the standard CU*BASE bulk transfer screens.
- Transfer money to the TCD or TCR from the branch vault using standard CU*BASE bulk transfer screens.

Dispensing Funds Using a TCR or TCD

The Auto Mix screen appears when dispensing cash from a TCD or TCR. F10-All from Drawer allows you to pull all funds from the teller drawer instead of from the device without having to manually clear every field, allowing you to set the mix yourself. Combination can be entered by number of bills or amount of money. Simply press Enter to confirm that your own mix matches the required dispense amount. Both the TCD and TCR count the money as it is dispensed by the machine, ensuring greater accuracy.

		Auto Mix		Override		Summary	
				Bills	Dollars		
Ones	\$1	0.00	0	0	0.00	Transfer amount	650.20
Five	\$5	0.00	0	0	0.00	Override amount	0.00
Tens	\$10	0.00	0	0	0.00	Net	0.00
Twenties	\$20	0.00	0	0	0.00		
Fifties	\$50	250.00	5	5	250.00		
Hundreds	\$100	400.00	4	4	400.00		
From drawer		0.20			0.20		
Totals		650.20			650.20		

The Auto Mix can be adjusted by amount or number of bills. The default Auto Mix is configured in the TCR or TCD supplemental vault configuration.

Depositing Funds Using a TCR

		Current Batch		Total Received	
		Bills	Dollars	Bills	Dollars
Ones	\$1	2	2.00	2	2.00
Five	\$5	2	10.00	2	10.00
Tens	\$10	2	20.00	2	20.00
Twenties	\$20	4	80.00	4	80.00
Fifties	\$50	4	200.00	4	200.00
Hundreds	\$100	2	200.00	2	200.00
To teller drawer					0.00
Total cash in			512.00		512.00

TCRs allow for deposits as well as dispenses and CU*BASE has a screen designed to allow you to do just that! This easy-to-use screen is accessed directly from the Main Teller Posting screen. Use the function keys to deposit the funds to the TCR. Confirm each deposit visually on the screen, then simply post the deposit. You are returned to the Main Teller Posting screen to complete your transaction.

Use F6-Deposit to TCR to deposit the bills. Different columns indicate the funds deposited in the last bundle, as well as in the entire deposit. F10-Save/Done lets you pull all of those bills back out of the machine (before the deposit is completed) and start over.

Perform Maintenance from One Screen

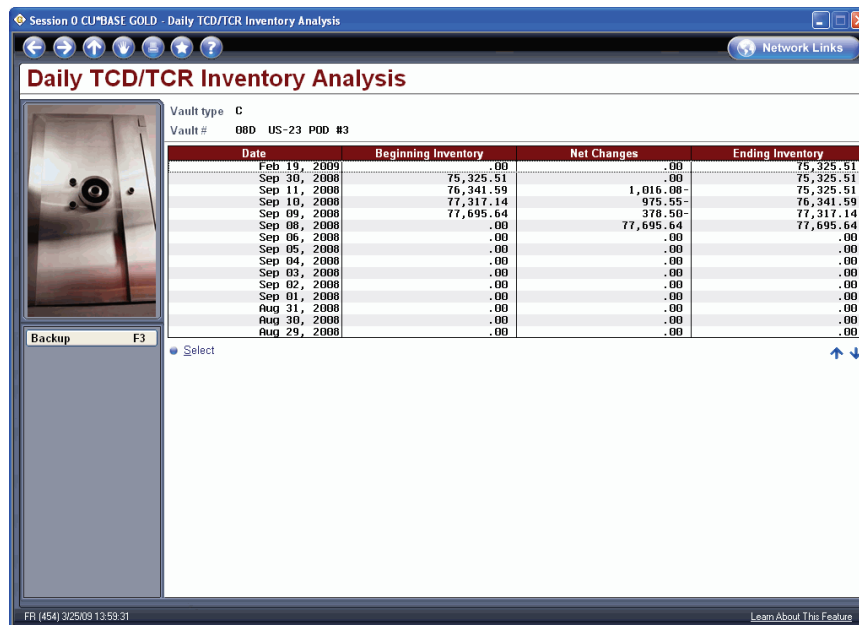


From MNHTEL #7 (shown above) you can perform all your maintenance functions.

CU*BASE provides one screen access to all of your TCD or TCR maintenance functions.

Both MNHTEL #5 and MNHTEL #7 provide access to all the TCD and TCR Maintenance options, including monitoring inventory and viewing transaction activity. MNHTEL #7 has an additional option allowing you to audit your TCR.

Inventory Analysis



Use the Inventory Analysis option to monitor activity on the TCD or TCR.

Monitor Your Inventory

Cassette	Denomination	# of Bills	Supp Vault Inventory	Status
1	1.00	580	580.00	Normal
2	5.00	566	2,830.00	Normal
3	10.00	373	3,730.00	Normal
4	20.00	1,440	28,800.00	Normal
5	50.00	391	19,550.00	Normal
6	100.00	197	19,700.00	Normal
Coins			135.51	
Total			75,325.51	

During the day, you can monitor the inventory in any TCD or TCR from any computer in the credit union. Simply use the Inventory option from the Daily Maintenance screen. This way you can stay on top of your current funding levels to determine when additional bills are needed.

Use the Inventory option to monitor the number of bills in the TCD or TCR from any computer in your credit union.

Performing an Audit on a TCR

MNHTEL #7 has an additional Audit option making it easy to dispense and load bills from TCR. This screen simplifies reconciling the inventory of each canister in the TCR. TCDs do not need this option since you can open the door of the TCD to remove its inventory. Give only your specially-designated employees access to this option.

Empty Module	Module	Denom	Beginning Inventory		# of Notes		
			# of Notes	Amount	Emptied	Reloaded	Machine Inventory
1	1	2	2	2.00	0	0	2
2	5	28	140	140.00	0	0	28
3	10	28	280	280.00	0	0	28
4	20	28	560	560.00	0	0	28
5	20	28	560	560.00	0	0	28
6	50	46	2,300	2,300.00	0	0	46
7	50	50	2,500	2,500.00	0	0	50
8	100	56	5,600	5,600.00	0	0	56
Total				11,942.00	0.00	0.00	11,942.00

Use the Audit option to remove bills from and load bills to the TCR when counting the inventory of the machine. TCDs do not need this option since you can simply open the door of the TCD to count its inventory.

It's Important to Select a Supported Model

When considering which model of TCD or TCR to select, it is important that you choose one that has been certified by CU*Answers. CU*Answers has worked with the models listed below and has designed custom interfaces to ensure compatibility with CU*BASE.

Before purchasing a TCD or TCR, contact the CU*Answers Systems Team to ensure your selection meets compatibility criteria. Models not listed below are not warranted work with the CU*BASE interface. All TCD and TCR models support InstaChange or Telequip coin dispensers.

TCD Models Supported by CU*BASE

The following TCD models are supported

- Talaris TCD 2000
- Talaris TCD 5000
- Talaris TCD 9000
- Talaris CashMaster (1342, 1346)
- Glory PD61
- Glory PD600
- Diebold 220 Express Cash Dispenser
- Diebold 1053 Cash Dispenser
- Arcatech Cash Dispenser

(Check with your sales person for current driver costs.)

This list is subject to change: Refer to the AnswerBook for the latest list of supported models (keyword "TCD").

TCR Models Supported by CU*BASE

The following TCR models are supported:

- Talaris TwinSafe and Vertera
- Glory RBUI I
- Diebold Cash Recycler
- Arcatech Cash Recycler

(Check with your sales person for current driver costs.)

This list is subject to change: Refer to the AnswerBook for the latest list of supported models (keyword "TCR").

What Else Do I Need to Consider?

Below are some additional things to consider when purchasing a TCD or TCR.

- Choosing your TCR vendor is critical if you wish to have an online interface to CU*BASE. The current interface is designed for “tightly coupled” interface between the TCD or TCR vendor and CU*Answers.
- Lutzwolf middleware is now available, which greatly expands the number of TCD and TCR models that CU*BASE supports. Contact *WESCO Net* for pricing and installation. Existing TCD configured with CU*BASE will not be affected by this change.
- In general most TCDs and TCRs CU*BASE interface uses single port connectivity, meaning that only one PC is connected to TCD or TCR, even though two teller workstations can use the device for member transactions. The TCD or TCR typically is attached to the left workstation connection and must be running the appropriate middleware. Some unit requires two serial ports while others utilize TCP/IP networking. Contact *WESCO Net* for the requirements of your TCD or TCR
- The CU*BASE interface uses TCP/IP communications protocol and requires a static IP address for the PC which drives the TCD or TCR (cannot be a “virtual” device name).
- Some TCR models have modules where inventory is retained by Serial Number. At the current time the CU*BASE interface will not support this option.
- If communication between your credit union and the CU*Answers iSeries is interrupted, CU*Answers recommends simply using funds from the teller drawer until communications are restored. It is not necessary to purchase and maintain a separate PC that runs the TCD or TCR in a

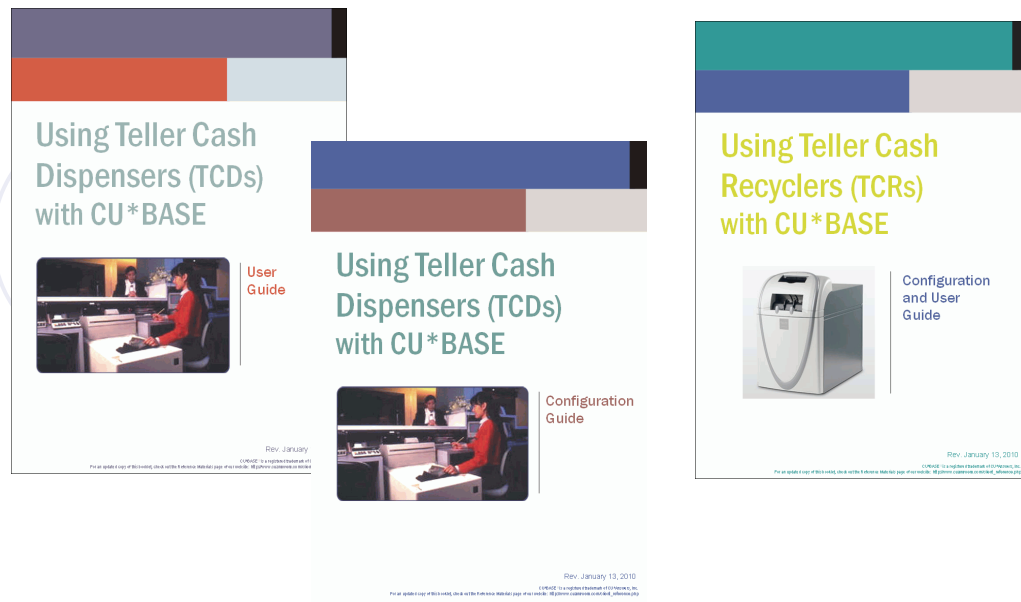
I'm Ready! How Do I Get Started?

Before you begin purchasing your TCDs and TCRs it is important to contact the Systems Team at CU*Answers.

- The CU*Answers technical team will review your TCD and TCR selection to ensure compatibility with CU*BASE and begin the implementation process.
- When the machines are purchased, the CU*Answers technical team will schedule a time to configure the communication between CU*BASE and the purchased devices.

I'm Interested—How Do I Learn More?

We have several reference materials to explain how TCDs and TCRs integrate with CU*BASE. Check out these materials posted on the CU*Answers Reference Page. Look under "T" on http://www.cuanswers.com/client_reference.php



CU*ANSWERS
A CREDIT UNION SERVICE ORGANIZATION

6000 28th Street, SE

Suite 100

Grand Rapids, Michigan 49546

(616) 285-5711

<http://www.cuanswers.com>