
How To Install ProDoc (CU*Answers ASP)

Installing ProDoc for the CU*Answers ASP environment

INTRODUCTION

This booklet was created to assist CU*Answers clients with the installation of the ProDoc software within the CU*Answers ASP environment. This booklet is not intended for use by eDoc ASP, in-house, or FM/hosted environments.

CONTENTS

GETTING READY	2
WORKSTATION REQUIREMENTS	2
SCANNERS, SIGNATURE PADS, AND PRINTERS	2
REQUIRED SOFTWARE	2
INSTALLING PRODOC	3
FINDING THE ISWEEP APPLIANCE	3
INSTALL THE PRODOC APPLICATION	3
SETTING THE FILE PERMISSIONS	6
SETTING UP A RECEIPT PRINTER	7
INSTALLING A RECEIPT PRINTER	7
GENERAL PRODOC PRINTER SETTINGS	7
CARSWELL THERMAL PRINTER SETTINGS	8
EPSON TM-T88IV (USB) SETTINGS	9
CREATING A PRINT SESSION	10
SETTING UP A SIGNATURE PAD	11
SETTING UP A SCANNER	12
INSTALL THE DRIVER	12
SELECT THE SCANNER	12
CALIBRATE THE SCANNER	13
WHAT NEXT?	15

Revision date: August 11, 2009

For an updated copy of this booklet, check out the Reference Materials page of our website:
http://www.cuanswers.com/client_reference.php
CU*BASE® is a registered trademark of CU*Answers, Inc.

GETTING READY

WORKSTATION REQUIREMENTS

Please ensure that prior to the installation that you are logged into the workstation as a user with local administrator privileges. Without local administrator privileges you will not be able to install or configure the ASP Client version of ProDoc. To obtain administrator privileges, please contact your IT support provider.

What does “local administrator privileges” mean? Permissions are typically granted per user on workstations. The user must have the ability to install programs and modify files on the workstation to install ProDoc. The user does not need authority over the network (domain) to install the software.

Make sure that the workstation meets the minimum hardware requirements for running CU*BASE GOLD and ProDoc, and that the workstation has network connectivity. Performance cannot be guaranteed on workstations that do not meet the minimum hardware requirements. If this workstation utilizes a signature pad or scanner, please ensure that there are ports available.

*Unsure of what the latest hardware requirements for CU*BASE GOLD are? Visit the Best Practices webpage below to find out!*

http://cuanswers.com/client_pm_bp_network.php

If any previous versions of the ProDoc are installed, it is strongly recommend that it be uninstalled before proceeding.

SCANNERS, SIGNATURE PADS, AND PRINTERS

All peripheral hardware must be disconnected from the workstation prior to installation. If the hardware is plugged in during installation, this could cause the software to install improperly and not function. This hardware includes signature pads, scanners, and printers.

For assistance with installing printers, please refer to the documentation available at http://cuanswers.com/client_reference.php.

REQUIRED SOFTWARE

Adobe Acrobat Reader 8.0 or higher is required to utilize the iDoc Vault website. If you do not have Adobe Acrobat Reader 8.0 or higher, please visit <http://www.adobe.com/> to download and install the latest version.

INSTALLING PRODOC

FINDING THE ISWEEP APPLIANCE

All software needed to install ProDoc and its components are available on the iSweep appliance. Every branch has an iSweep on-site. To find the installation software, you will need to browse to the iSweep appliance at your branch.

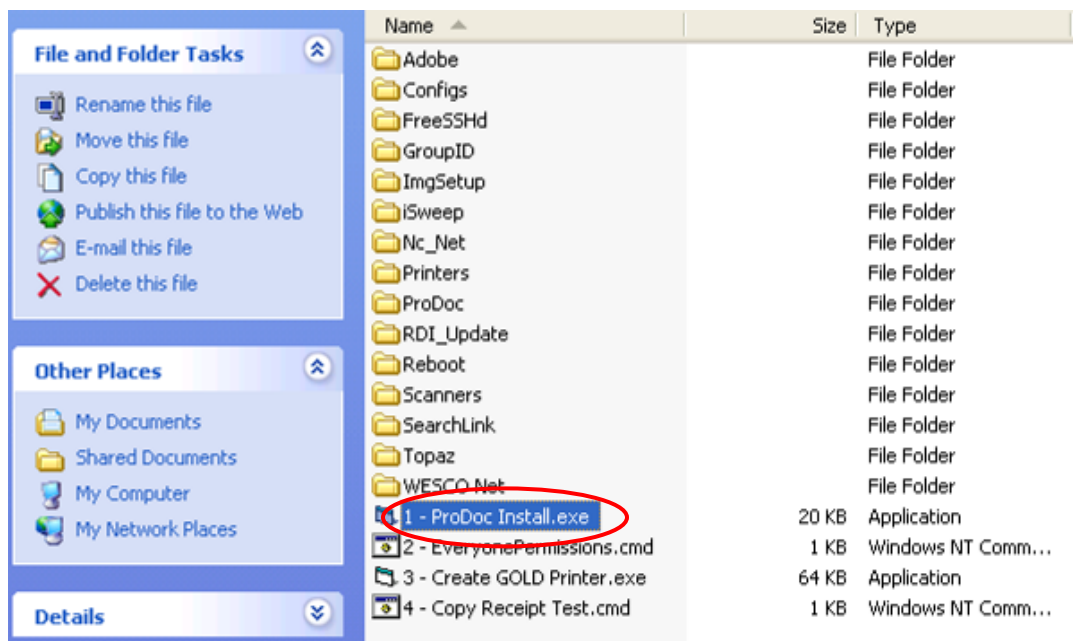
If you do not know the IP address or hostname of your iSweep appliance, please contact a member of the WESCO Net Team to obtain this information.

To browse to your iSweep, click on “Start” then “Run.” At the prompt, type “\\” followed by the IP address of your iSweep. For instance, if the IP address of the iSweep is 10.150.0.69, you would type “\\10.150.0.69” (without quotes). Click “OK.”

Open the “RDI” directory, and then open the “RDI Installation” directory. This directory contains all the installation files needed to install and configure ProDoc.

INSTALL THE PRODOC APPLICATION

Double click on “1 - ProDoc Install.exe” to begin the installation. When prompted click “Run” or “Open.” Depending on your PC’s security configuration, you may be prompted twice.

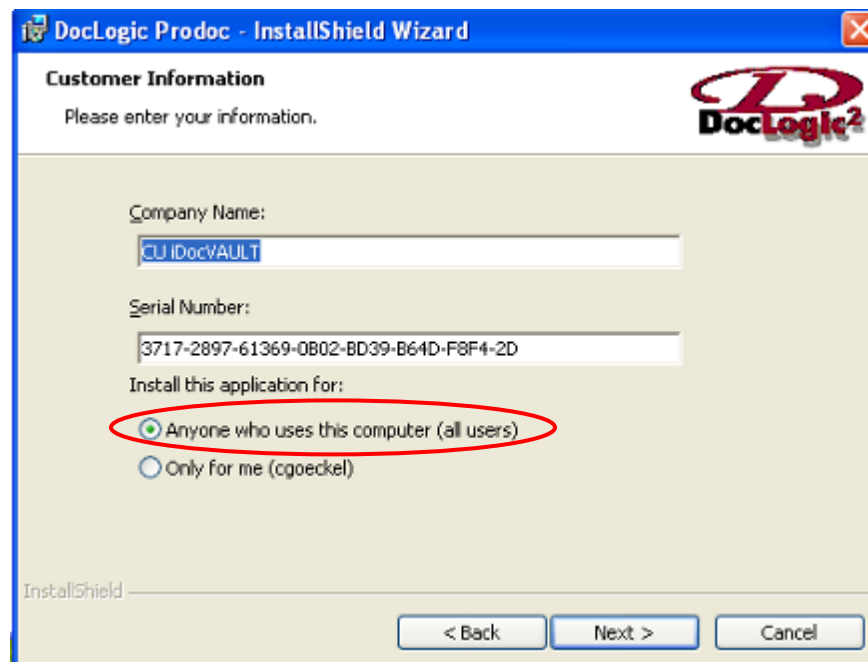


Click “Next” to begin the installation wizard. Accept the license agreement and click “Next.”

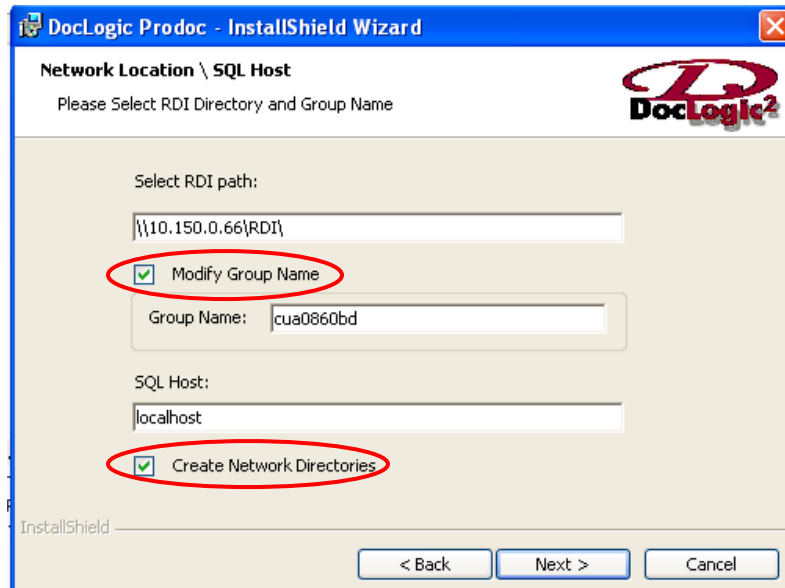


Leave the information as-is for the “Company Name” and “Serial Number.” Make sure that “Anyone who uses this computer” is selected and click “Next.”

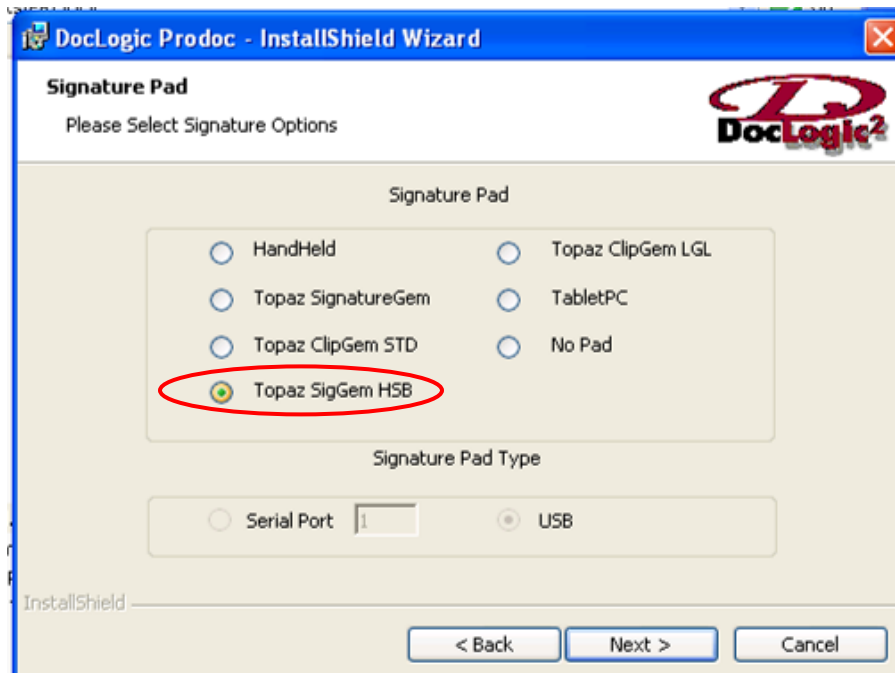
If the “Company Name” and “Serial Number” fields are blank, ensure that you are logged into the workstation with local administrative privileges and restart the setup program.



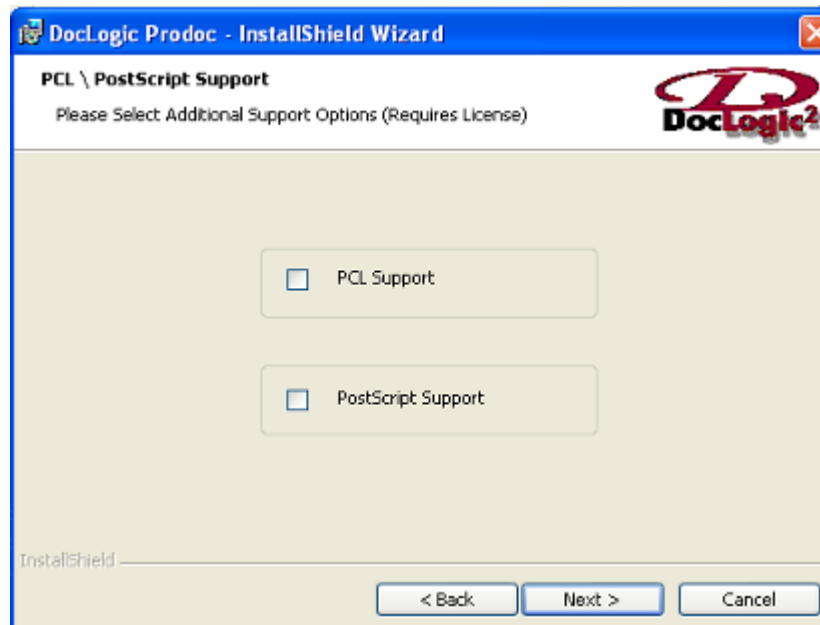
Check the boxes for “Modify Group Name” and “Create Network Directories.” Leave the other fields as they are. Click “Next.”



If this workstation has a signature pad attached, select “Topaz SigGem HSB.” If this workstation does not have a signature pad, select “No Pad.” Click “Next.”



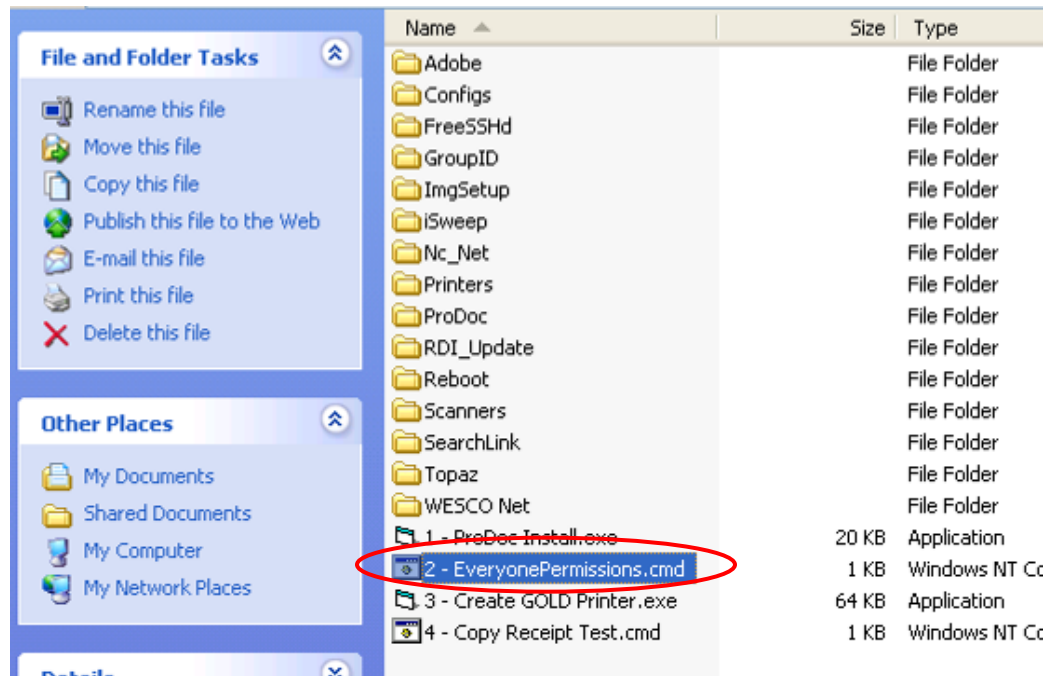
Leave the boxes for “PCL Support” and “PostScript Support” unchecked. Click “Next.”



Click “Install.” ProDoc will run through the installation. When prompted, click “Finish” to exit the wizard and return to the installation directory.

SETTING THE FILE PERMISSIONS

From the “RDI Installation” directory, double click “2 - Everyone Permissions.cmd.” When prompted click “Run” or “Open.” Depending on your PC’s security configuration, you may be prompted twice.



A command prompt window will open up and run through a script. This will automatically set the correct permission on the CU*BASE and ProDoc installation directories. The window will close automatically when complete.

SETTING UP A RECEIPT PRINTER

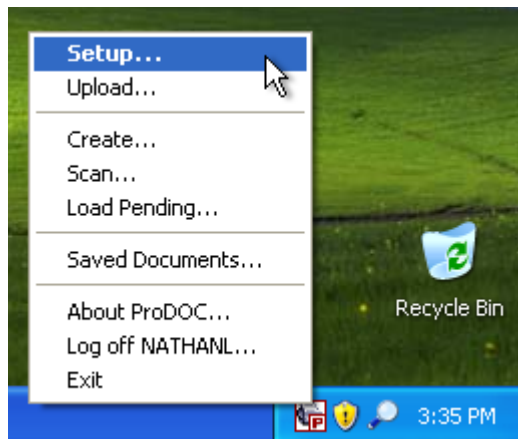
INSTALLING A RECEIPT PRINTER

For assistance with installing printers, please refer to the documentation available at http://cuanswers.com/client_reference.php.

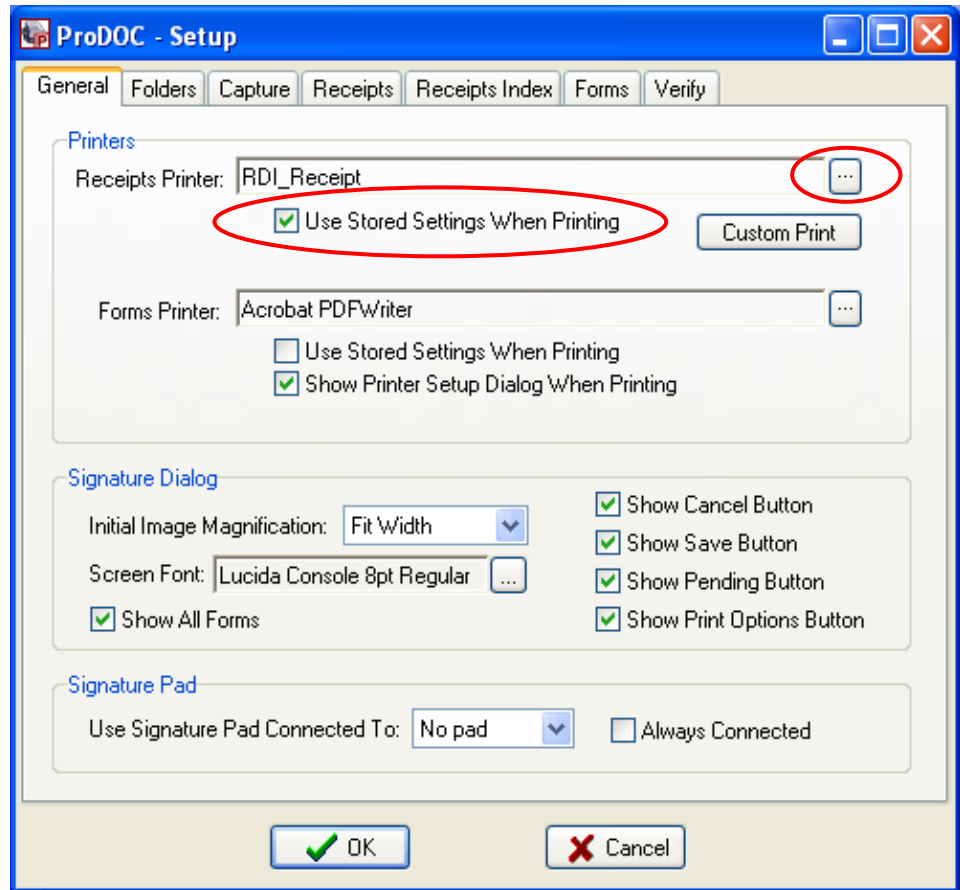
GENERAL PRODOC PRINTER SETTINGS

It is important to note that ProDoc selects printers based on the name of that printer. This is why it's important that the printer is named "RDI_Receipt" (case does not matter). If the receipt printer is not named "RDI_Receipt," printing issues may occur with ProDoc.

To configure a printer within ProDoc, make sure that ProDoc is signed in. Right-click the ProDoc icon in the system tray (near the time) and select "Setup."

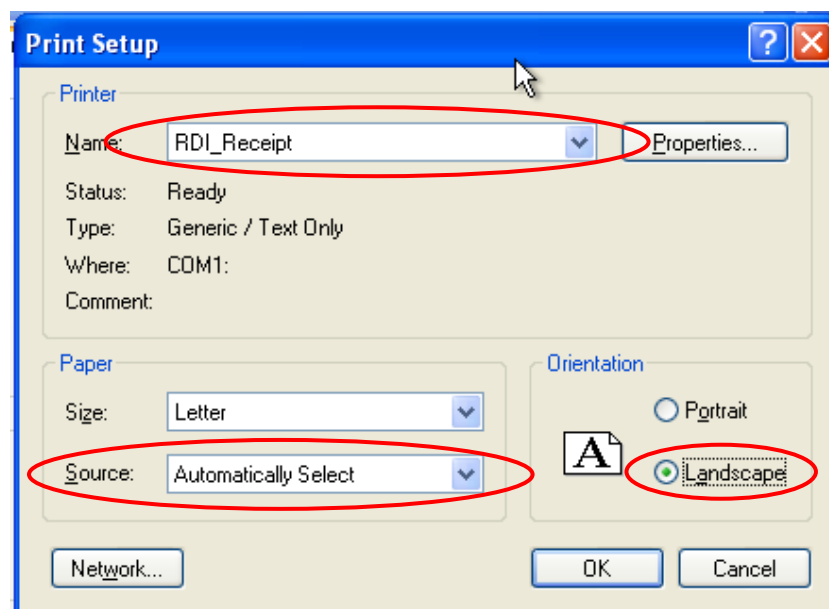


Ensure that box for "Use Stored Settings When Printing" is selected. Click the "..." to the right of the "Receipts Printer" line.



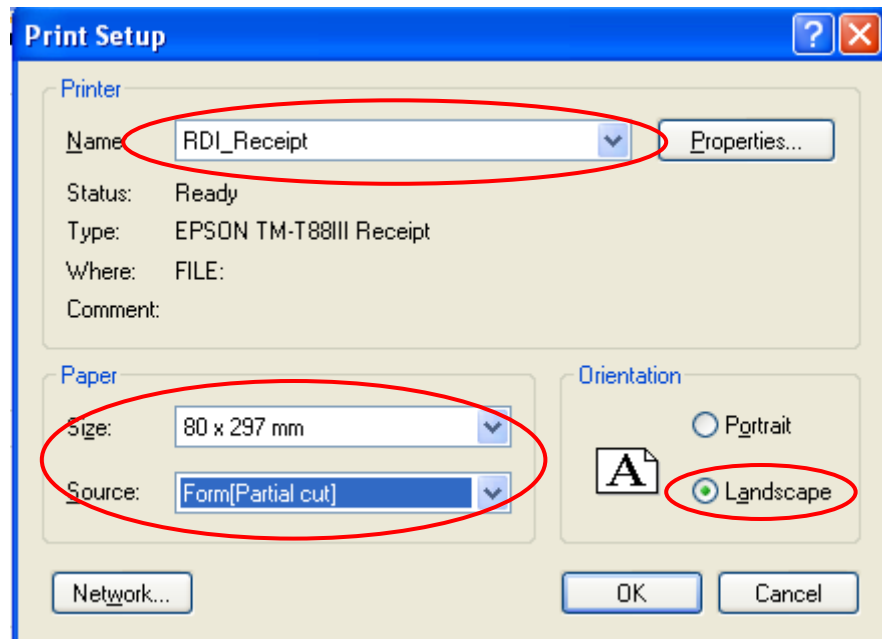
CARSWELL THERMAL PRINTER SETTINGS

If you are using an Epson thermal receipt printer with the Carswell module, first ensure that the “RDI_Receipt” printer is selected in the drop down at the top of the “Print Setup” window. Ensure that “Landscape” is selected, and that the “Source” is set to “Automatically Select.” Click “OK” twice.



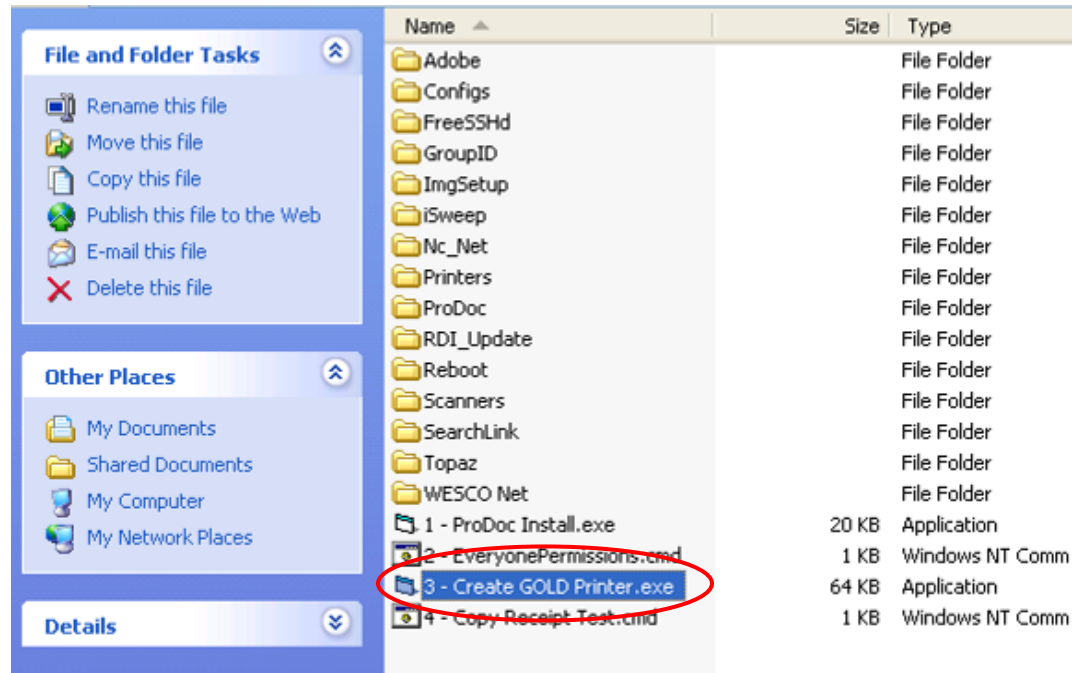
EPSON TM-T88IV (USB) SETTINGS

If you are using an Epson TM-T88IV thermal receipt printer with a USB connection, first ensure that the “RDI_Receipt” printer is selected in the drop down at the top of the “Print Setup” window. Ensure that “Landscape” is selected, that the “Size” is “80 x 297mm” and that the “Source” is set to “Form[Partial Cut].” Click “OK” twice.

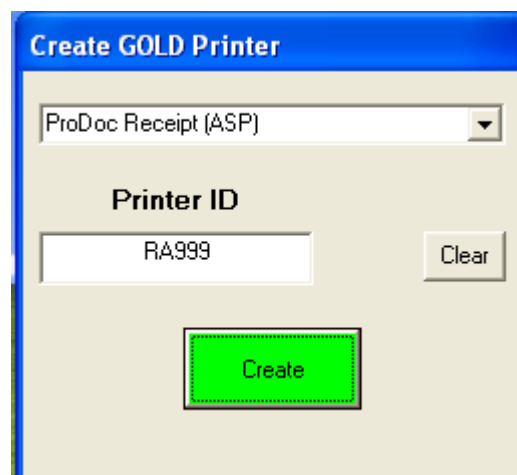


CREATING A PRINT SESSION

From the “RDI Installation” folder on the iSweep, double click “3 – Create GOLD Printer.exe.” When prompted click “Run” or “Open.” Depending on your PC’s security configuration, you may be prompted twice.



From the drop down list, select “ProDoc Receipt (ASP)” then enter the GOLD ID of this workstations print session in the “Printer ID” field. Click “OK” then “Create.” Select “No” to creating another session.

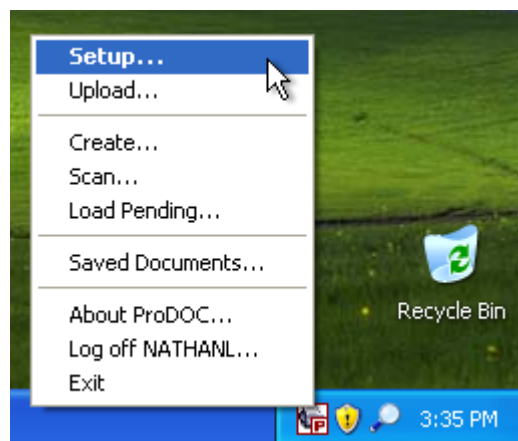


SETTING UP A SIGNATURE PAD

Plug the signature pad into the workstation. Windows will automatically install the driver for the signature pad.

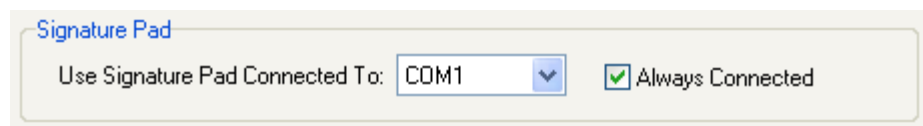
If the pad was connected during the installation of ProDoc, errors may occur. You will need to disconnect the pad, uninstall ProDoc, then reinstall ProDoc. Reconnect the pad after the installation has completed to reinstall the proper driver.

To configure ProDoc to use the pad, make sure that ProDoc is signed in. Right-click the ProDoc icon in the system tray (near the time) and select “Setup.”



At the bottom of the “Setup” window is the “Signature Pad” section. Ensure that “COM1” is selected and that “Always Connected” is checked.

If you do not see the “Signature Pad” section in the setup, you do not have the proper authority within ProDoc. A ProDoc administrator will need to sign into ProDoc to change this setting.



SETTING UP A SCANNER

INSTALL THE DRIVER

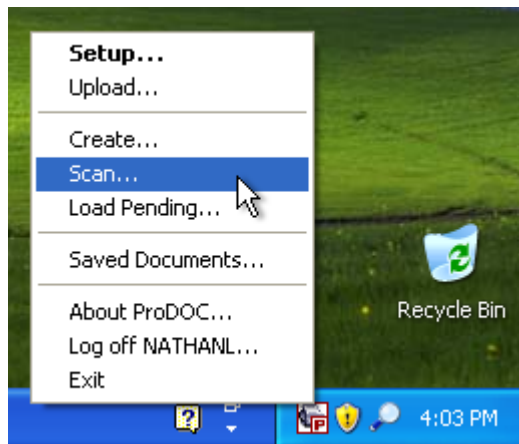
First make sure that the scanner is not attached to the workstation. If it is, unplug it.

From the “RDI Installation” directory on the iSweep, browse to the “Scanners” directory. Select the appropriate model and run the installation program. Use the defaults for the installation.

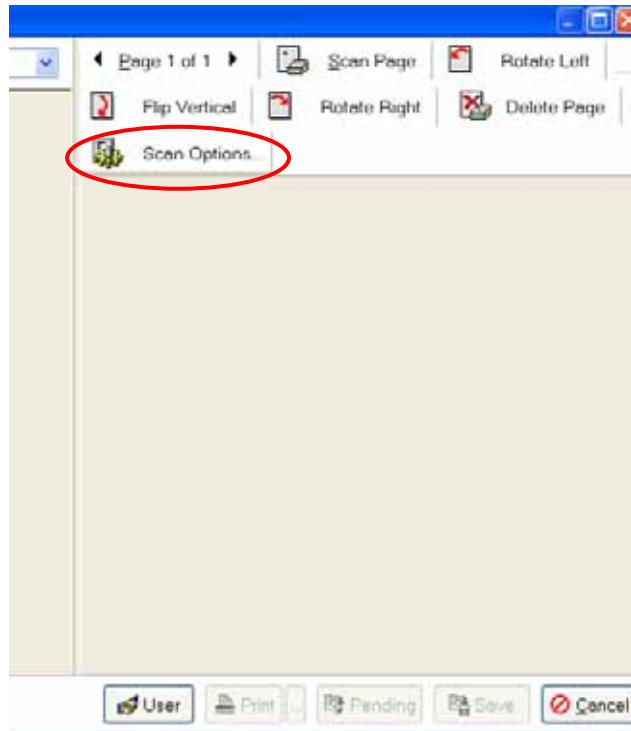
After the installation has completed, plug the scanner into the workstation. Windows will automatically finish installing the driver for the scanner.

SELECT THE SCANNER

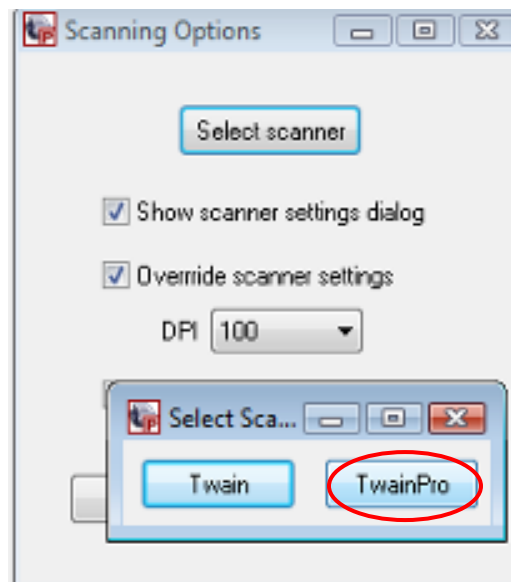
To use the scanner with ProDoc, first make sure that ProDoc is signed in. Right-click the ProDoc icon in the system tray (near the time) and select “Scan.”



At the top of the scan window, click “Scan Options.”



Ensure that “Override scanner settings” is checked and the “DPI” is set to “100.” Click “Select scanner” then click “TwainPro.”



Select the appropriate scanner from the list of available scanners. If you do not see your scanner listed, ensure that the scanner is plugged in and that driver installation completed successfully. Click “OK” twice to return to the scan window.

CALIBRATE THE SCANNER

The scanner came with a black and white sheet of cut paper. This paper is the calibration sheet and will be needed to calibrate the scanner.

The scanner will need to be calibrated once per installation. If the scanner is disconnected from a workstation then reconnected, it will need to be recalibrated again.

At the top of the scan window, click “Scan Page.”

The screen that opens will vary based on the model scanner you have. Locate and click the “Calibrate” button. Feed the calibration sheet into the scanner with the black stripe facing down and the arrows facing into the scanner. Click the “Calibrate” button again to calibrate the device.

The calibration sheet will be pulled back and forth through the scanner several times. A confirmation of a successful calibration will appear on screen. Click “OK” until you are back to your desktop.

Unfortunately, due to the varying models of scanners available, we cannot provide exact instructions and screen shots for every model. Please refer to the documentation that came with your scanner for more in-depth instructions.

WHAT NEXT?

CONGRATULATIONS!

You have successfully installed and configured ProDoc for the CU*Answers ASP environment!

If you have any issues after completing this document, please immediately contact a member of the WESCO Net Team for support. You can reach WESCO Net at 800-327-3478, option 3, or by email at cusupport_team@wesconet.com.

This document does not cover installation or configuration of related software or hardware, such as CU*BASE GOLD or thermal printers. Please refer to the “Docs And Information” pages at cuanswers.com for up-to-date documentation on these items.

*Can't find the document you need? Contact the CU*Answers Client Services department or the WESCO Net Team for assistance.*